

# Care Lift Slings

## Care Sling

The Care Sling is our most popular sling style and is designed to fit the needs of most patients. It is available in polyester for regular use, and mesh for bathing.

### Polyester:

- 400018 – Small Sling
- 400020 – Medium Sling
- 400022 – Large Sling
- 400017 – X-Large Sling
- 400015 – Bariatric Sling

### Mesh:

- 400008 – Small Sling
- 400010 – Medium Sling
- 400012 – Large Sling
- 400011 – X-Large Sling
- 400014 – Bariatric Sling



Care Sling (Mesh)



### Medcare Slings Contain Antimicrobial Product Protection

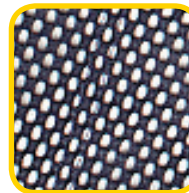
Microban antimicrobial protection works 24/7 for an added level of cleanliness protection. Microban inhibits the growth of microbes such as bacteria, mold and mildew that can cause stains, odors and product deterioration on our slings.



### Care Sling Fabric Swatches



Polyester



Mesh



## Care Sling with Head Support

This sling is ideal for patients with weak or poor head control. Head support slings are available in polyester for regular use, and mesh for bathing.

### Polyester:

- 400028 – Small Sling w/ Head Support
- 400030 – Med. Sling w/ Head Support
- 400032 – Large Sling w/ Head Support
- 400034 – X-Large Sling w/ Head Support
- 400036 – Bariatric Sling w/ Head Support

### Mesh:

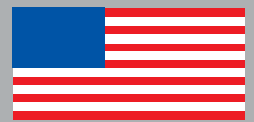
- 400038 – Small Mesh Sling w/ Head Support
- 400040 – Med. Mesh Sling w/ Head Support
- 400042 – Large Mesh Sling w/ Head Support
- 400043 – XL Mesh Sling w/ Head Support
- 400041 – Bariatric Mesh Sling w/ Head Support



Care Sling with Head Support (Polyester)



Our wide range of sling styles meets many multi-care needs. Medcare slings slightly stretch to provide a contoured fit to most body shapes while the 4-point hook-up system ensures patient comfort. Medcare Slings are the first and only slings treated with Microban® antimicrobial product protection.



MADE IN THE USA



## Multi-Purpose Sling

Designed for a variety of uses, Multi-purpose Slings have wider straps that are more comfortable between the legs. These straps can also be configured so straps do not go between legs.

### Polyester:

- 400024 – Small Multi-purpose Sling
- 400025 – Medium Multi-purpose Sling
- 400026 – Large Multi-purpose Sling
- 400027 – X-Large Multi-purpose Sling

### Mesh:

- 400044 – Small Multi-purpose Mesh Sling
- 400048 – Large Multi-purpose Mesh Sling



## Commode Sling

Commode slings are designed to provide easy transfers to and from commodes or toilets or for hygienic purposes. An enlarged opening makes utilizing the commode quicker and easier than standard slings, with minimal interference of clothing or sling material. An adjustable belt attaches around the waist for added security and comfort during transfers.

### Mesh:

- 400071 – Small Commode Sling
- 400072 – Medium Commode Sling
- 400073 – Large Commode Sling
- 400074 – X-Large Commode Sling



## Full Body Sling with Hole

Full body slings with holes are designed to provide transfer for hygienic purposes. They are generally used to transfer from bed to chair.

### Mesh:

- 400111 – Small
- 400112 – Medium
- 400113 – Large
- 400114 – X-Large



## Repositioning Sling

The Repositioning Sling is breathable and meant to be left on the bed under the sheet. This sling, along with a Medicare Ceiling Lift, makes turning or boosting a patient very easy.

### Mesh:

- 402500 – Repositioning Sling,  
Dimensions: 55.5" w x  
80.5" l



## Amputee Slings

Amputee slings are designed to make amputee transfers more comfortable. They are available in polyester for regular use, and mesh for bathing.

### Polyester:

- 400053 – Small Amputee Sling
- 400050 – Medium Amputee Sling
- 400051 – Large Amputee Sling
- 400052 – X-Large Amputee Sling

### Mesh:

- 400055 – Medium Mesh Amputee Sling
- 400056 – Large Mesh Amputee Sling
- 400054 – X-Large Mesh Amputee Sling



Amputee

## Double Amputee Slings

### Polyester:

- 400064 – Small Double Amputee Sling
- 400057 – Medium Double Amputee Sling
- 400059 – Large Double Amputee Sling
- 400062 – X-Large Double Amputee Sling

### Mesh:

- 400061 – Medium Mesh Double Amputee Sling
- 400056 – Large Mesh Amputee Sling
- 400054 – X-Large Mesh Amputee Sling

### Polyester with Head Support:

- 400065 – Small Double Amputee Sling with Head Support
- 400058 – Medium Double Amputee Sling with Head Support
- 400060 – Large Double Amputee Sling with Head Support
- 400063 – X-Large Double Amputee Sling with Head Support
- 400067 – Bariatric Double Amputee Sling with Head Support



Double Amputee

## Stretcher Sling

For patients that must be kept in a supine position, the stretcher sling allows easy transfer of a patient from bed to gurney or operating table. The sling is breathable and may be left under patient.

### Polyester:

- 402450 – Stretcher Sling,  
Dimensions: 47.5" w  
x 80.5"



## Extended Hanger Bar

The extended hanger bar is for use with Morgue and Stretcher slings and is rated at 1000 lbs.



### Item Numbers:

- 400609 – For use with Medicare Ceiling Lifts
- 400604 – For use with Medicare Care Lifts

## Sling Sizing

Use the sizing chart below as a general guide. Keep in mind that two patients that are the same weight may have a completely different body shape and size and may require different size slings.

Weight	Sling Size	Strap Color
>100 lbs.	Small	Black
100-210 lbs.	Medium	Blue
210-310 lbs.	Large	Yellow
310-450 lbs.	X-Large	White
450-1000 lbs.	Bariatric	Purple

Med  
HANDLE WITH CARE.

Make sure you are using slings & belts with the highest level of protection. Look for this tag.



## Medcare Products

151 East Cliff Road  
Burnsville, MN 55337

Toll-free: 800-695-4479  
Fax: 952-894-7153

www.medcarelifts.com

© 2009 Medicare Products Inc.  
Specifications are subject to change without notice. All products referred herein are registered trademarks or trademarks of their respective holders. MICROBAN is a registered trademark of Microban Products Company.